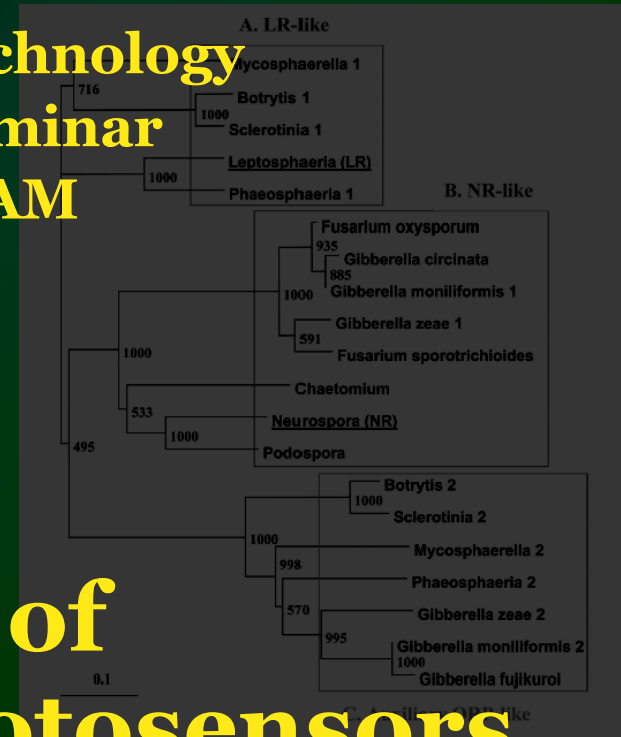
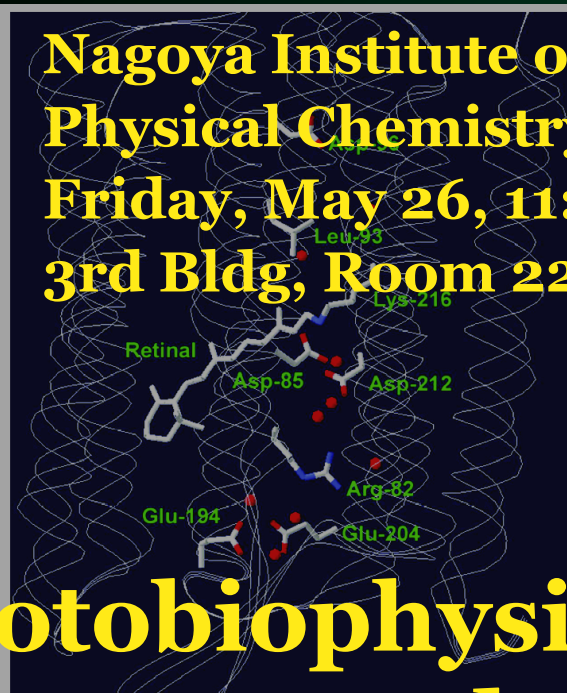




**Nagoya Institute of Technology
Physical Chemistry Seminar
Friday, May 26, 11:00 AM
3rd Bldg, Room 221**



Photobiophysics of Novel Ion Pumps and Photosensors

	82 85 93 96	185 194	204 212 216
Haloarchaea	FVNRGADRLPTPLLLDADL	IKVDRNIVVMSAYFVWVIGSE	TELLDNLVLDVSRVGGFLLDR
BR	SQWRVHVALSTPMLLAGLL	EDTDRVITVLMGLYFVVAVEG	VRSWASVLDVFAHVVAFILDR
HR	VYLARVDRVITPLIVLQAM	SVTDRNITVLMITVYVWVSEF	NVHIVVYVDFISDAVAFALGA
SR-II	IVGLRVDRVITPLVSYGYA	SNLKNHIGLMLAVVWVDFPA	GVALTYVLDVLAQVVFYFAR
SR-I			
Eubacteria			
GPR	PTVFRVDRLLVPLLCSPYLD	VNTVMYIIFGVAIVFVQFTYIM	NNNLINVAIFVNRVGLLWVVA
BPR	PTVFRVDRLLVPLLVVSPYLD	VNMMMLIIFGVAIVFVQFTYIM	NNNLINVAIFVNRVGLLWVVA
Candidatus	PTVFRVDRLLVPLLVVSPYLD	VNMMMLIIFGVAIVFVQFTYIM	NNNLINVAIFVNRVGLLWVVA
Rubrobacter	FVNRVDRVITPLLLDADL	ERTVDRVITVLMGLYFVVAVEG	NRVLDVLDVFAHVVAFILDR
Kineococcus	TLVFRVDRVITPLLVVFLAM	VRNVAIDVSRVGGFLLDR	TVQVGRVLDVFAHVVAFILDR
Anabaena SR	AHYFRVDRVITPLLLDADL	VDKIVFRVITVLMGLYFVVAVEG	TVQVGRVLDVFAHVVAFILDR
Gloeobacter	NDAYFRVDRVITPLLVVFLAM	VRNMRVLDVSRVGGFLLDR	GVQVGRVLDVFAHVVAFILDR
Salinibacter	NDAYFRVDRVITPLLVVFLAM	LGNARVLDVSRVGGFLLDR	ALQVGRVLDVFAHVVAFILDR
Fungi			
NR	FVNRVDRVITPLLLDADL	IKVDRNIVVMSAYFVWVIGSE	TELLDNLVLDVSRVGGFLLDR
LR	FVNRVDRVITPLLLDADL	IKVDRNIVVMSAYFVWVIGSE	TELLDNLVLDVSRVGGFLLDR
Phaeosphaeria 1	FVNRVDRVITPLLLDADL	IKVDRNIVVMSAYFVWVIGSE	TELLDNLVLDVSRVGGFLLDR
Phaeosphaeria 2	FVNRVDRVITPLLLDADL	IKVDRNIVVMSAYFVWVIGSE	TELLDNLVLDVSRVGGFLLDR
Sclerotinia 1	FVNRVDRVITPLLLDADL	IKVDRNIVVMSAYFVWVIGSE	TELLDNLVLDVSRVGGFLLDR
Sclerotinia 2	FVNRVDRVITPLLLDADL	IKVDRNIVVMSAYFVWVIGSE	TELLDNLVLDVSRVGGFLLDR
Botryotinia 1	FVNRVDRVITPLLLDADL	IKVDRNIVVMSAYFVWVIGSE	TELLDNLVLDVSRVGGFLLDR
Botryotinia 2	FVNRVDRVITPLLLDADL	IKVDRNIVVMSAYFVWVIGSE	TELLDNLVLDVSRVGGFLLDR
Chaetomium	FVNRVDRVITPLLLDADL	IKVDRNIVVMSAYFVWVIGSE	TELLDNLVLDVSRVGGFLLDR
Podospora	FVNRVDRVITPLLLDADL	IKVDRNIVVMSAYFVWVIGSE	TELLDNLVLDVSRVGGFLLDR
Gibberella zeae 1	FVNRVDRVITPLLLDADL	IKVDRNIVVMSAYFVWVIGSE	TELLDNLVLDVSRVGGFLLDR
Gibberella zeae 2	FVNRVDRVITPLLLDADL	IKVDRNIVVMSAYFVWVIGSE	TELLDNLVLDVSRVGGFLLDR
Mycosphaerella 1	FVNRVDRVITPLLLDADL	IKVDRNIVVMSAYFVWVIGSE	TELLDNLVLDVSRVGGFLLDR
Mycosphaerella 2	FVNRVDRVITPLLLDADL	IKVDRNIVVMSAYFVWVIGSE	TELLDNLVLDVSRVGGFLLDR
Cryptococcus	FVNRVDRVITPLLLDADL	IKVDRNIVVMSAYFVWVIGSE	TELLDNLVLDVSRVGGFLLDR
Ustilago 1	FVNRVDRVITPLLLDADL	IKVDRNIVVMSAYFVWVIGSE	TELLDNLVLDVSRVGGFLLDR
Ustilago 2	FVNRVDRVITPLLLDADL	IKVDRNIVVMSAYFVWVIGSE	TELLDNLVLDVSRVGGFLLDR
Ustilago 3	FVNRVDRVITPLLLDADL	IKVDRNIVVMSAYFVWVIGSE	TELLDNLVLDVSRVGGFLLDR
Algae			
Guillardia	FVNRVDRVITPLLLDADL	IKVDRNIVVMSAYFVWVIGSE	TELLDNLVLDVSRVGGFLLDR
Pyrocystis	FVNRVDRVITPLLLDADL	IKVDRNIVVMSAYFVWVIGSE	TELLDNLVLDVSRVGGFLLDR
Acetabularia 1	FVNRVDRVITPLLLDADL	IKVDRNIVVMSAYFVWVIGSE	TELLDNLVLDVSRVGGFLLDR
Acetabularia 2	FVNRVDRVITPLLLDADL	IKVDRNIVVMSAYFVWVIGSE	TELLDNLVLDVSRVGGFLLDR

**Prof. Leonid S. Brown
(Dept. Physics, University of Guelph, Canada)**



**All inquiries to Hideki Kandori
Tel: 052-735-5207
kandori@nitech.ac.jp**